

HT40

**VERSATILE AND PRODUCTIVE
ASYMMETRIC LOAD ARM
DESIGN WITH SYMMETRIC
COLUMNS FOR IMPROVED
VEHICLE ENTRY AND EXIT**

**BACKED BY A BUSINESS WITH 100
YEARS OF PRIDE AND INNOVATION
IN VEHICLE LIFTING.**

**DESIGNED, ENGINEERED, TESTED AND BUILT
TO A LEVEL UNLIKE ANY OTHER!**

hanmecsonTM
BY ROTARY SOLUTIONS

**ENGINEERED BY PASSION
BUILT ON LEGACY**

**THE BRAND YOU KNOW,
THE LIFT YOU NEED.
STRONGER. SAFER. TRUSTED.**

4,000 kg lift capacity with 3-stage front
& 2-stage rear arms and the capability
to service a large range of road going
vehicles, including EV.

Easily spot, lift & service

- Uni-body Cars & SUV's
- Battery Electric
- Low Profile
- Truck Frame*

The Hanmecson Difference

- Strong, single-piece symmetric column
- Lift carriage strength and design
- Load arm design and pick-up range
- 90 mm minimum pick-up height
- Single point operation
- Quality workmanship

*With optional truck adapters



**5 + 2
WARRANTY**

**5 YEARS
STRUCTURE
2 YEARS
ELECTRIC
HYDRAULIC**



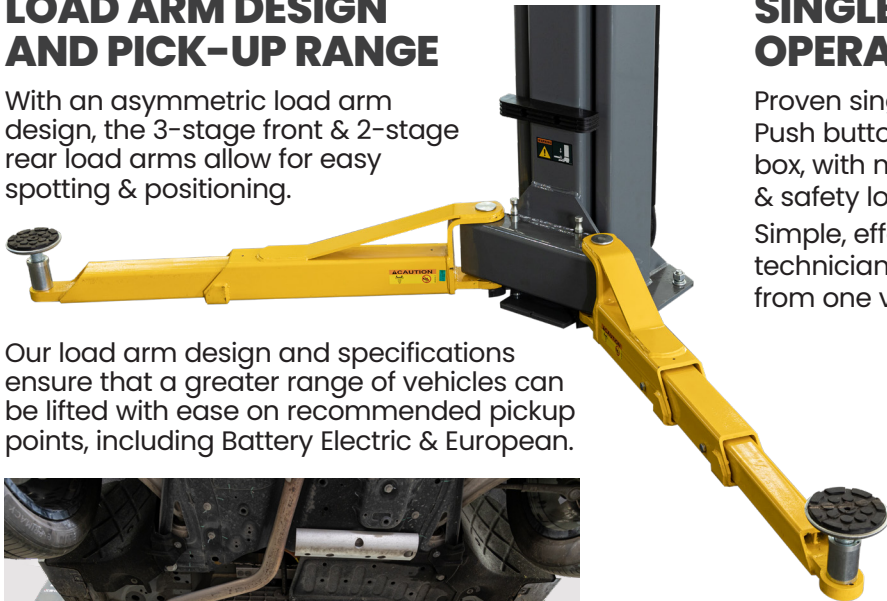
View On WeChat

SIMPLE TO SPOT.

LOAD ARM DESIGN AND PICK-UP RANGE

With an asymmetric load arm design, the 3-stage front & 2-stage rear load arms allow for easy spotting & positioning.

Our load arm design and specifications ensure that a greater range of vehicles can be lifted with ease on recommended pickup points, including Battery Electric & European.



LOW PROFILE SPIN-UP ADAPTERS WITH RUBBER PADS

Supplied standard with 2-stage, threaded pickup adapters.

With 90 mm minimum height, easily spot the lowest of vehicles.

90
mm



With the threaded pick-up adapters fully adjusted, together with the included 65 mm extension adapters, technicians can instantly increase the pickup height to 191 mm.



SIMPLE TO OPERATE.

SINGLE POINT OPERATION

Proven single point operation. Push button raising via control box, with manual lowering valve & safety lock release for lowering. Simple, effective and ensures the technician is always in control from one vantage point.

Control box shown and not applicable in all regions. Power unit with push button raise also available.



DUAL HYDRAULIC CYLINDERS WITH WIRE CABLE EQUALIZATION

Dual hydraulic cylinders are the driving force behind lift performance and ensure strong, smooth operation. Coupled with overhead wire cable equalization, it allows the lift to operate safely for improved technician piece-of-mind.

HT40 LIFTS COME STANDARD WITH



FOUR (4) LOW-PROFILE, 2-STAGE, ROUND SPIN-UP ADAPTERS

90MM MINIMUM PAD HEIGHT

Round adapters are designed for use with uni-body and battery electric vehicles. The round rubber pad ensures no metal on metal contact and allows for protection of a vehicles under-body



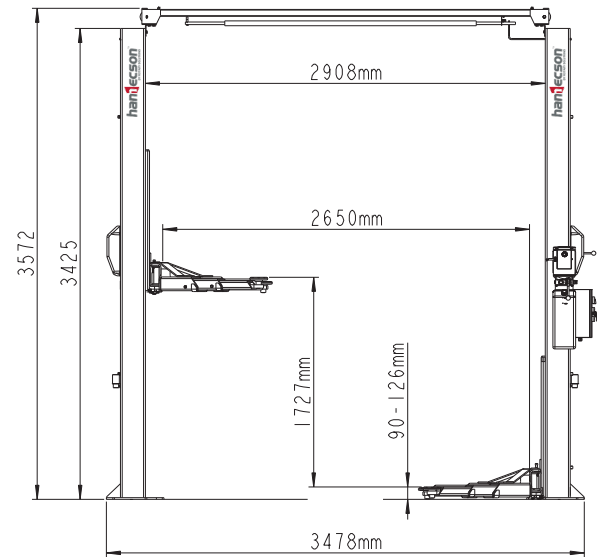
FOUR (4) 65mm DROP-IN EXTENSION ADAPTERS

Extension adapters help technicians reach pick-up points for high-ride vehicles like SUV's. They simply drop into the load arm.

THE HANMECSON DIFFERENCE.

FEATURES

- Sturdy clear floor design
- Strong single-piece symmetric columns
- Single point operation and lock release
- Dual safety lock mechanisms
- 3-stage front arms and 2-stage rear arms for asymmetric vehicle lifting
- Low profile 2-stage spin-up adapters
- Spring operated arm restraints
- Dual hydraulic cylinders
- Overhead wire cable equalization
- Padded roof protection bar with limit switch
- Durable powder coat paint finish
- Includes 65mm adapter extensions and bracket
- Optional lift adapters & accessories to maximize lift capability & shop efficiency



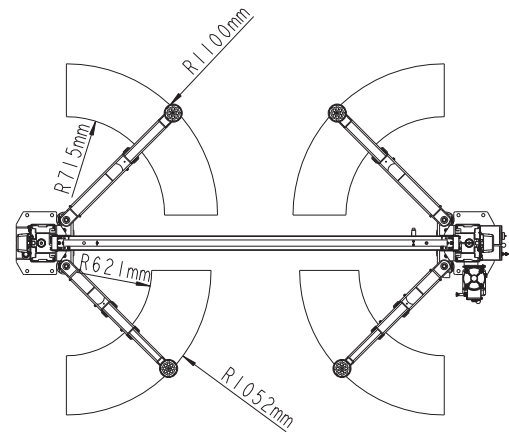
SPECIFICATION DRAWING

STRONG SINGLE-PIECE SYMMETRIC COLUMNS

Our equipment, tooling and production processes ensure reduced integrity impacts on the material used in our lifts, this increases lift longevity. Single piece columns also allow for improved assembly and installation times.

LIFT CARRIAGE STRENGTH AND DESIGN

Our lift carriage design coupled with the use of solid UHMW slider blocks, ensures improved stabilization and travel within the column. Easy access to equalization cable points ensures quick install & serviceability.

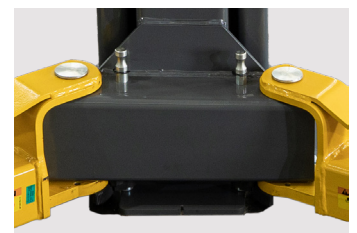


DUAL SAFETY LOCK MECHANISMS

Mounted to the rear of each column, the lift is equipped with dual safety lock mechanisms. The locking pawls automatically engage the lock ladder of the carriage as the lift is raised. Both locks are disengaged for lowering via the single lock release handle on the control column.

SPRING OPERATED ARM RESTRAINTS

Featuring a fine tooth design, the arm restraints are formed vs machined, offering a high-quality finish for increased longevity. The arm restraint provides the ultimate range in motion & ensures technician peace of mind.





HT40

FEATURES & SPECIFICATIONS:

Capacity	4000 kg
Maximum Rise with 65mm Extension Adapter	1918 mm
Overall Height	3572 mm
Ceiling Height Required	3700 mm
Overhead Switch	3445 mm
Width Inside Columns	2908 mm
Drive-Thru Width	2645 mm
Overall Floor Width	3478 mm
Front Arm Reach (Min)	621 mm
Front Arm Reach (Max)	1052 mm
Rear Arm Reach (Min)	715 mm
Rear Arm Reach (Max)	1100 mm
Minimum Adapter Height without Extension	90 mm
Maximum Adapter Height with 65 mm Extension	191 mm
Speed of Rise	46 sec
Speed of Descent	22 sec
Phase / Voltage	3-Ph 380v 1-Ph 230v 50 / 60 Hz
Minimum Concrete Thickness	150 mm
40' Container Loading	30 Units

Specifications subject to change without notice or liability.



To learn more about all of our automotive service and repair solutions please contact your local sales representative.

Need assistance or have questions? We're here to help:

Asia-Pacific Sales: enquiryasia@vsdover.com

Asia-Pacific Support: technicalsupportasia@vsdover.com

HANMECSON By Rotary Solutions

No.1388 Xiushan East Road, Haimen, Nantong, China 226199

Lit# [Hanmecson.HT40.Cutsheet.2025.09.19](#)

©2025 VEHICLE SERVICE GROUP™

All Rights Reserved. Unless otherwise indicated, ROTARY SOLUTIONS™, VEHICLE SERVICE GROUP™, DOVER® and all other trademarks are property of Dover Corporation and its affiliates.

Product specifications, part numbers, images and component descriptions are subject to change without notice or liability.

AVAILABLE ACCESSORIES



89 & 127 MM EXTENSION ADAPTERS

Kits of four stackable extension adapters, bracket and hardware

FJ0089 - 4* 89mm Adapters
FJ0127 - 4* 127mm Adapters



TRUCK RUBBER ADAPTERS

Kit of four rubber adapters, bracket and hardware

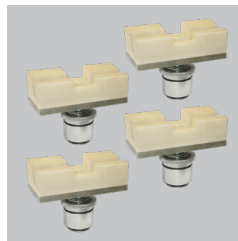
T100285



RECTANGULAR EV LIFTING ADAPTER

Kit of four rubber adapters for lifting EV vehicles (Tesla, Honda and Other)

FJ6244KIT



MERCEDES BENZ G WAGON LIFTING ADAPTER

Kit of four rubber adapters for lifting Mercedes Benz G Wagon

FJ6247KIT



FOOT PROTECTION BARS

Kit of four foot protection bars and hardware to suit front & rear load arms, with hardware

FJ00D5



HYDRAULIC HOSE COVER

Channel cover suitable for both master & slave columns to hide hydraulic hose & electrical cables

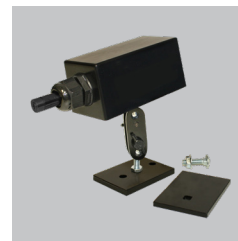
FJ00D6



LOCK LIGHT™

Kit with indicator light assembly, pressure switch, mounting bracket & cable. Mounts to cross beam and illuminates when lift is lowered to safety lock

FA8240-KIT1



SPOTLINE™ LASER

Kit with laser & hardware for mounting to cross beam. Motion activated laser for guided spotting of vehicle

FA7840Y-KIT1



WHEEL WING™

With 45 kg capacity, the tyre arm mounts to lift arms and folds away when not in use. Kit includes 2 tyre arms, 2 magnetic dishes and shims

FA5974