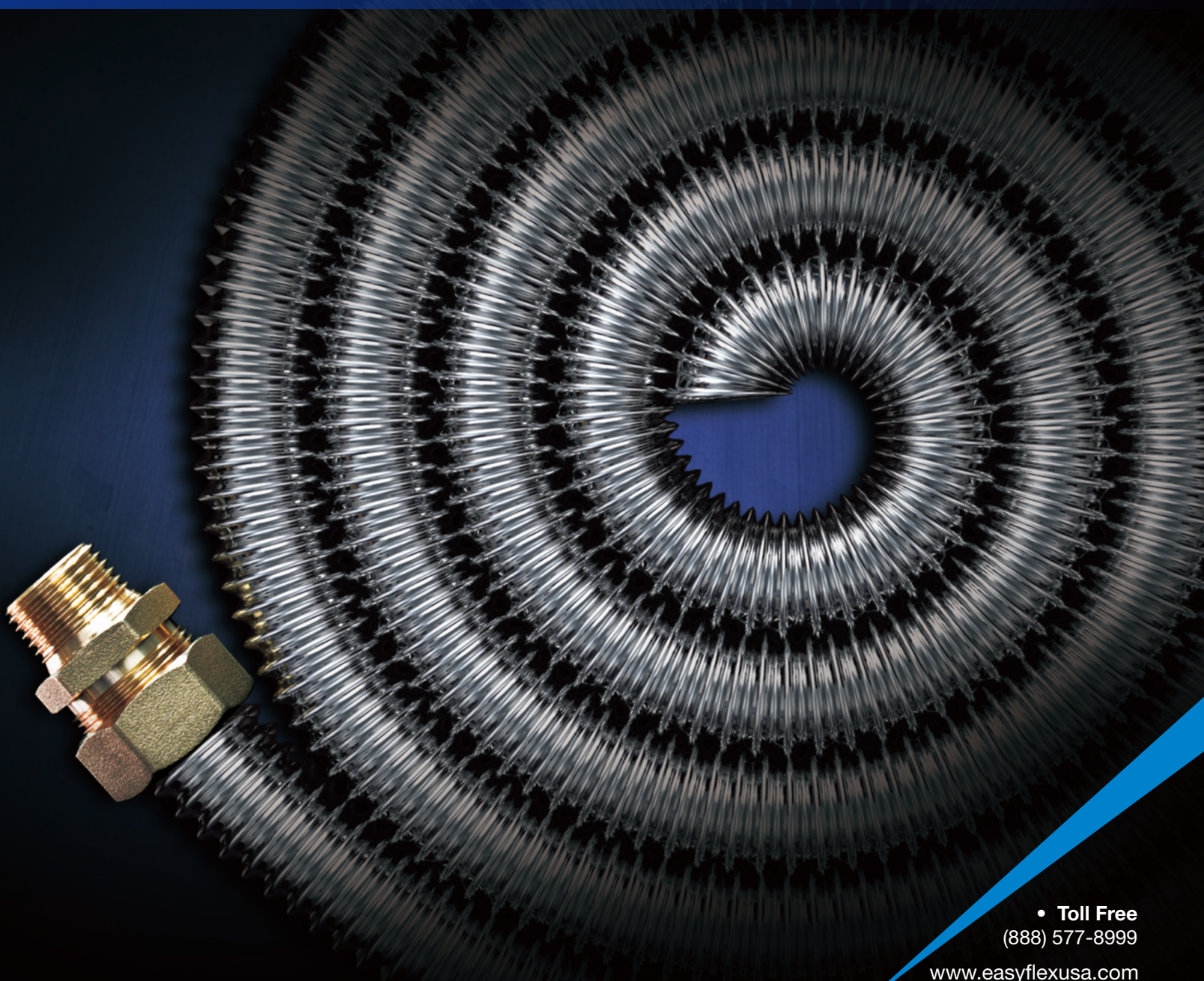


Global Pipe Manufacturer
EASYFLEX



Corrugated Stainless Steel Water Line System

Flexible water distribution piping system for plumbing applications.
The simplest and fastest solution for re-piping, renovations and new constructions.



• Toll Free
(888) 577-8999

www.easyflexusa.com

Corrugated Stainless Steel Tube Water Line System

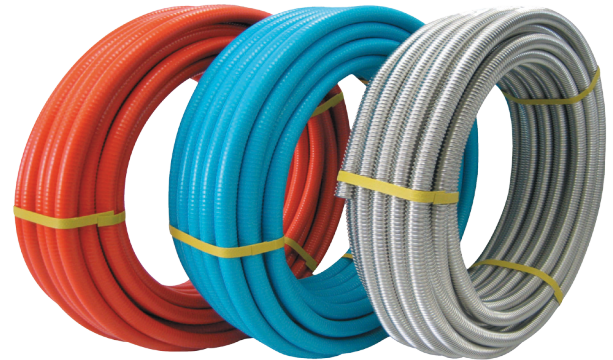


Applications

New Construction, Repair, Retrofit, Water Heaters

Benefits

- Reduced Labor Costs
- Corrosion & Scaling Resistant
- No Special Tools required
- Minimal Fittings
- Environmentally Safe

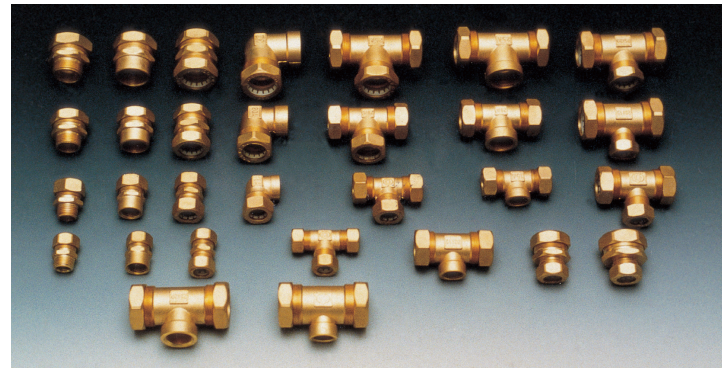


Materials & Specifications

Tubing	Stainless Steel 304			
Coating	Polyethylene (PE)			
Types	Blue, Red, Uncoated			
Sizes (Not all size shown)	1/2"	3/4"	1"	1-1/4"
Inner Diameter	0.55"	0.83"	1.03"	1.26"
Thickness	0.012"			
Coating Thickness	0.02"			
Available Lengths	50, 100, 150 ft /Roll			

Max. Operating Temperature	212°F (100°C)			
Max. Operating Pressure	1/2"	3/4"	1"	1-1/4"
	220psi	176psi	147psi	110psi
Burst Pressure	1420 psi			

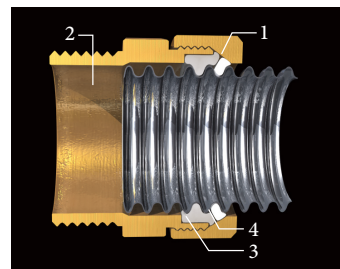
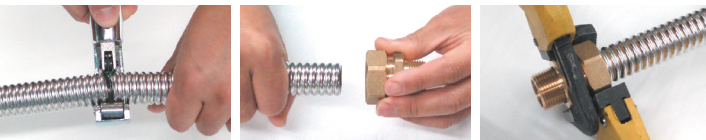
Brass Fittings



- Straight Male
- Straight Female
- Elbow
- Tee
- Female Tee
- Tee Reducing
- Female Tee Reducing
- Coupling / Union
- Reducing Coupling
- Copper Sweat
- Push-Fit

Installation

1. Cut the tube to the required length.
2. Push the end of the tube firmly into the fitting.
3. Tighten the nut (See installation instructions for details).



1. Nut : Brass
UNS C37700 (ASTM DS-561)
2. Body : Brass
UNS C37700 (ASTM DS-561)
3. Sealing Ring : Silicon
4. Grab Ring : Nylon 66 or
STS 304